

Anti-B7-H6 hIgG1 Antibody(BI-765049)

Product information

GM-86750AB-10	10 µg
GM-86750AB-100	100 µg
GM-86750AB-1000	1 mg

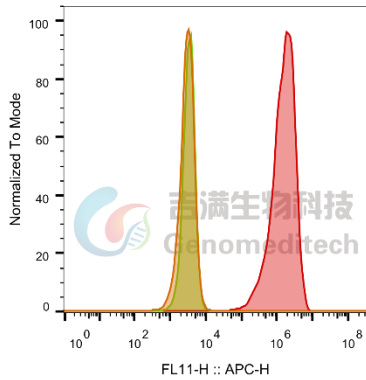
Antibody Information

Species Reactivity	Human;
Clone	BI-765049
Source/Isotype	Monoclonal human IgG1, κ
Application	Flow cytometry; Bioactivity-ELISA
Specificity	Detects B7-H6
Gene	B7-H6
Other Names	NCR3LG1 , B7H6, B7-H6, DKFZp686O24166
Gene ID	374383 (human); 102121659 (Cynomolgus)
Background	B7-H6 is a type I transmembrane protein belonging to the B7 family, characterized by two immunoglobulin domains. It also serves as a ligand for the NK cell-activating receptor NKp30. While B7-H6 is prominently expressed on various tumor cells, no B7-H6 mRNA has been detected in normal human tissues or healthy peripheral blood mononuclear cells. In an inflammatory milieu, certain pro-inflammatory cytokines like IL-1β and TNF can induce the upregulation of B7-H6 expression in CD14+CD16+ monocytes and neutrophils. The tumor expression spectrum of B7-H6 is extensive, encompassing leukemia, lymphoma, colorectal cancer, non-small cell lung cancer, breast cancer, ovarian cancer, stomach cancer, and liver cancer.
Storage	Store at 2-8°C short term (1-2 weeks).Store at ≤ -20°C long term. Avoid repeated freeze-thaw.
Formulation	Phosphate-buffered solution, pH 7.2.
Endotoxin	< 1 EU/mg, determined by LAL gel clotting assay

Data Examples

Flow cytometry

H_NCR3LG1(B7-H6) CHO-K1 Cell Line (Catalog #GM-C36446)was stained with Anti-B7-H6 hlgG1 Antibody(BI-765049) (Catalog # GM-86750AB) or isotype control antibody, followed by anti-Human IgG APC-conjugated Secondary Antibody.

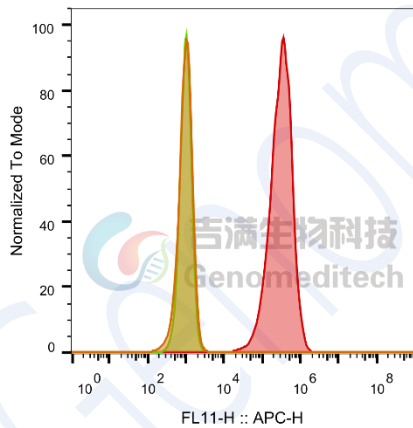


SampleID	Geometric Mean : FL11-H
HEK-293 anti-B7-H6+APC-2nd Ab	2944
HEK-293 H_NCR3LG1(B7-H6) H_IgG+APC-2nd Ab	3376
HEK-293 H_NCR3LG1(B7-H6) anti-B7-H6+APC-2nd Ab	1.42E6

Fig. FACS

Flow cytometry

Cynomolgus_NCR3LG1(B7-H6) CHO-K1 Cell Line (Catalog # GM-C36448)was stained with Anti-B7-H6 hlgG1 Antibody(BI-765049) (Catalog # GM-86750AB) or isotype control antibody, followed by anti-Human IgG APC-conjugated Secondary Antibody.



SampleID	Geometric Mean : FL11-H
CHO-K1 anti-B7-H6+APC-2nd Ab	971
CHO-K1 Cyno_NCR3LG1(B7-H6) H_IgG+APC-2nd Ab	1007
CHO-K1 Cyno_NCR3LG1(B7-H6) anti-B7-H6+APC-2nd Ab	289579

Fig. FACS

Bioactivity-ELISA

Human NCR3LG1(B7-H6) Protein; His Tag (Catalog # GM-87646RP) was immobilized at 1 µg/ml (100 µL/well). Increasing concentrations of Anti-B7-H6 hIgG1 Antibody(BI-765049) (Catalog # GM-86750AB) were added.

Bioactivity-ELISA

0.1 µg Human NCR3LG1(B7-H6) Protein; His Tag of per well

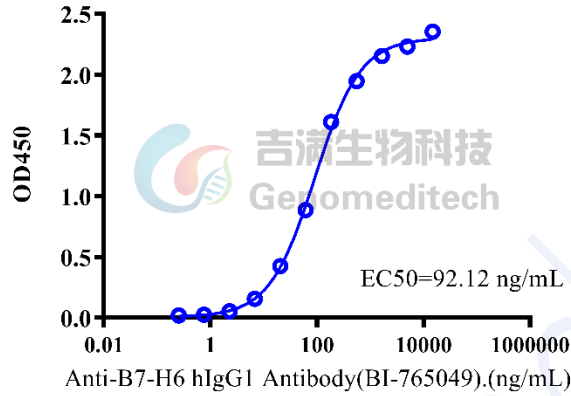


Fig. assay

Bioactivity-ELISA

Cynomolgus NCR3LG1(B7-H6) Protein; His Tag (Catalog # GM-87649RP) was immobilized at 1 µg/ml (100 µL/well). Increasing concentrations of Anti-B7-H6 hIgG1 Antibody(BI-765049) (Catalog # GM-86750AB) were added.

Bioactivity-ELISA

0.1 µg Cynomolgus NCR3LG1(B7-H6) Protein; His Tag of per well

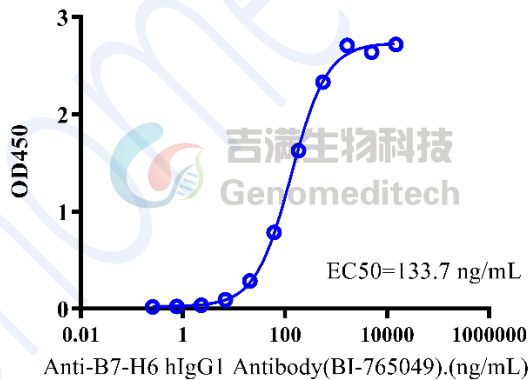


Fig. assay

Bioactivity-ELISA

Biotinylated Human NCR3LG1(B7-H6) Protein; His-Avi Tag (Catalog # GM-87647RP) was immobilized at 1 µg/ml (100 µL/well) on streptavidin pre-coated. Increasing concentrations of Anti-B7-H6 hIgG1 Antibody(BI-765049) (Catalog # GM-86750AB) were added.

Bioactivity-ELISA

0.1 µg Biotinylated Human NCR3LG1(B7-H6) Protein; His-Avi Tag of per well

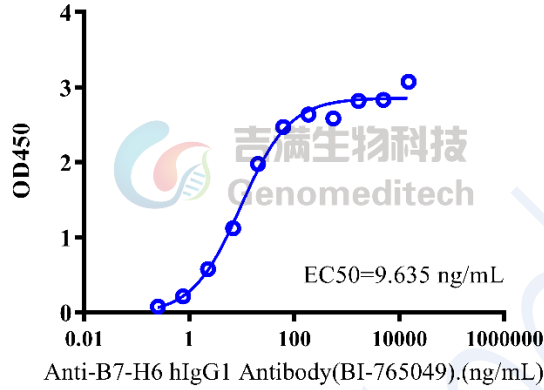


Fig. assay

Bioactivity-ELISA

Biotinylated Cynomolgus NCR3LG1(B7-H6) Protein; His-Avi Tag (Catalog # GM-87650RP) was immobilized at 1 µg/ml (100 µL/well) on streptavidin pre-coated. Increasing concentrations of Anti-B7-H6 hIgG1 Antibody(BI-765049) (Catalog # GM-86750AB) were added.

Bioactivity-ELISA

0.1 µg Biotinylated Cynomolgus NCR3LG1(B7-H6) Protein; His-Avi Tag of per well

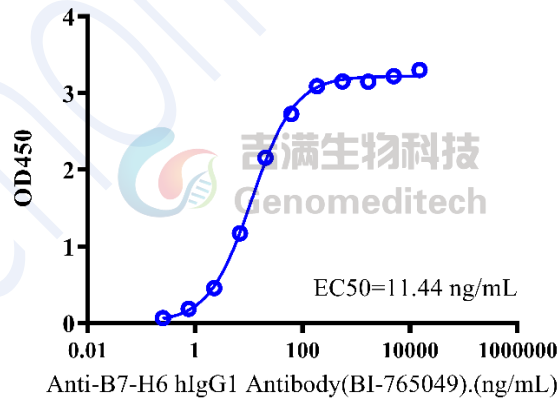


Fig. assay